



OPTIMAX SERIES OF TRIM SAWS

AUTO-MAX

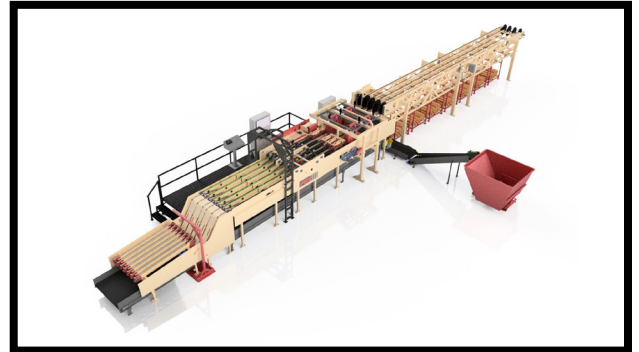
THE CUTTING EDGE OF TECHNOLOGY



Available in Two Models



Model V1



Model V2

Based in the latest technologies, and produced through years of extensive research and development, the Auto-Max provides solutions to the most central issues of pallet lumber reclaim -- optimizing lumber and labor. With only 1-2 operators the Auto-Max feeds, scans, optimizes, prioritizes output, cuts, and sorts multiple lengths/widths/thickness categories -- accurately and consistently at up to 3,000 boards per hour!

OPTIMAX SERIES OF TRIM SAWS

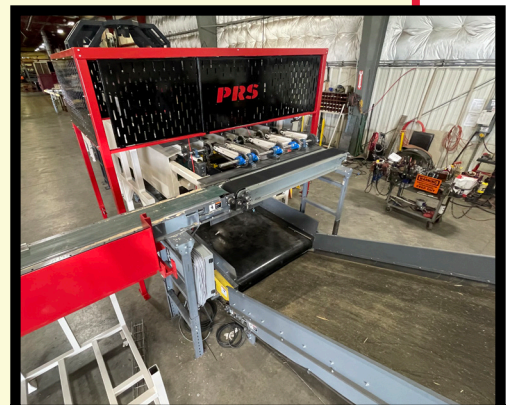
AUTO-MAX MODEL V1



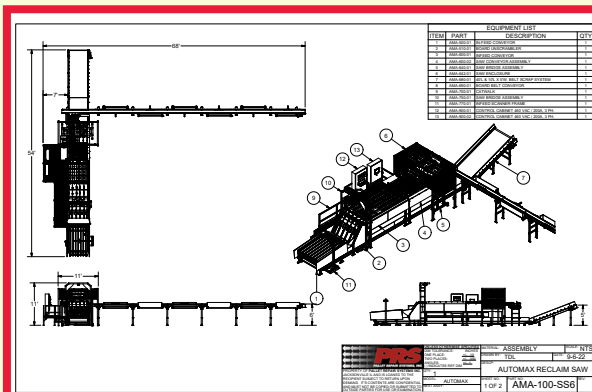
View of Multi Level Conveyance System with Optional PRS Lumber Racks

The Auto-Max Model V1 Includes

- 7 strand drag chain conveyor to feed lumber in to the unscrambler pit
- Unscrambler to singulate and feed boards on to scanning conveyor
- Multi-strand chain conveyor for operator tending and lumber scanning
- Overhead scan sensor, VAB scanning software, and one server computer
- Trap gate automatically removes unusable boards after scanning – before trimming to reduce waste, board jams and downtime
- Lugged chain conveyor with parallel even ending rollers
- High speed moving fence and direct drive edge trim saw – enables double end trimming
- Four drop saws – positioning preset by PLC and servo motors
- **90 degree design lumber sortation with 4 to 7 sort positions available**
- Joe Scan dimensional scanner to verify boards at sorting
- Scrap conveyor system – automatic removal of all scrap from machine
- **Optional – PRS lumber racks and rack conveyance automation to load/unload lumber racks in and out of sorting system.**



View of Scrap Conveyance



View of Scanner

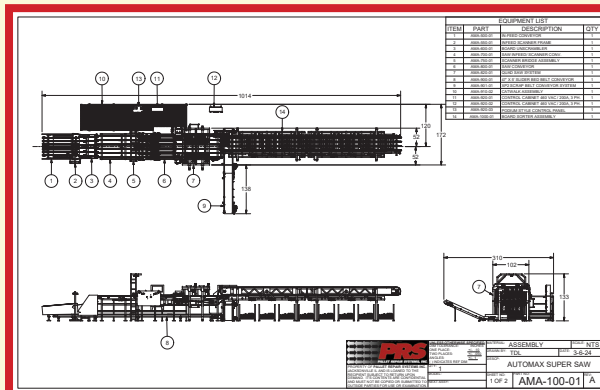
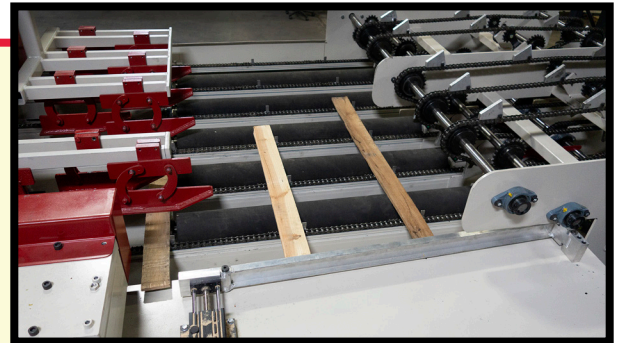
OPTIMAX SERIES OF TRIM SAWS

AUTO-MAX MODEL V2



The Auto-Max Model V2 Includes

- 7 strand drag chain conveyor to feed lumber in to the unscrambler pit
- Unscrambler to singulate and feed boards on to scanning conveyor
- Multi-strand chain conveyor for operator tending and lumber scanning
- Overhead scan sensor, VAB scanning software, and one server computer
- Trap gate automatically removes unusable boards after scanning – before trimming to reduce waste, board jams and downtime
- Lugged chain conveyor with parallel even ending rollers
- High speed moving fence and direct drive edge trim saw – enables double end trimming
- Four drop saws – positioning preset by PLC and servo motors
- **Linear design auto-sort system with both 5 & 8 drop sort versions available**
- Scrap conveyor system – automatic removal of all scrap from machine
- **Optional – PRS lumber racks and rack conveyance automation to load/unload lumber racks in and out of sorting system.**



OPTIMAX SERIES OF TRIM SAWS

AUTO-MAX

THE CUTTING EDGE OF TECHNOLOGY

Auto-Max Tech Specs and Benefits

- Nearly hands free operation – minimal physical labor required
- Measurement by laser and high-speed 3D camera
- Speed up to 93.75 lineal ft per minute
- Overhead arch installation for top scanning with option for bottom scanning, and expansion to 8'
- Uses just one server computer
- Defects removed by fence positioning and trim saw/ drop saws
- Defect identification and positioning
- Configurable defect definition and tolerances
- Solutions transmitted to production line PLC
- Production capacities up to 30,000 boards per 8 hour shift

Manage your lumber processing with valuable insights. The scanning software provides reports on inputs & outputs of material being processed.

Board Dimensions

- Cuts 30" to 60" lengths.
- Boards that are longer than 62" increments will pause the machine to be removed after scanning
- Accepts 2" to 7" Wide Boards
- Accepts 24" to 62" Long Boards
 - Less than 24" Boards will be rejected to the scrap conveyer
 - Longer than 62" Boards will pause the machine to be removed after scanning
- Accepts .25" to 1.75" Thick Boards
- Hands-Free individual Board loading onto Chain Lugs using Unscrambler
 - For Processing (Trimming, Cutting, final Sorting), and Timing
 - Unscrambler Board Loading by user. Several means can be applied
- Boards with up to 2.50" of unusable area from Trimming Edge can be cut off

(Trim Edge is the edge of the Board near the Trim Saw of the Auto-MAX Machine with the programmed Mobile Fence)

Sorting Capabilities

- Priorities of Sorting
- Quantity Counts (Total of Job and BIN Total)
- Pause and Re-Start
 - Can Re-Start after a Pause to fix Board problems
 - Timing will still be in place for processing and sorting
- Scrap Conveyance
 - Edge and End Cuts and Rejected Boards
 - Fall into Scrap Conveyor below
- Resolution and Line Speed:
 - 3,000+ Boards per Hour
 - Designed Speed: 93.75 lineal ft per minute
 - Longitudinal 20 scans per inch (0.05")
 - Transversal 30 cross section per inch (0.033")
- Saw Blades for Edge Trim Saw and Cut-Off Saws
 - 16" DIA
 - 60 Tooth
 - Custom KERF teeth
 - 30mm Bore
- Cut-Off Saw Motor: 7.5HP, 3600 RPM, 460 3PH, TEFC
- Edge-Trim Saw: 3HP, 3600 RPM, 460 3PH

